



The Right People,  
Experience, and  
Track Record

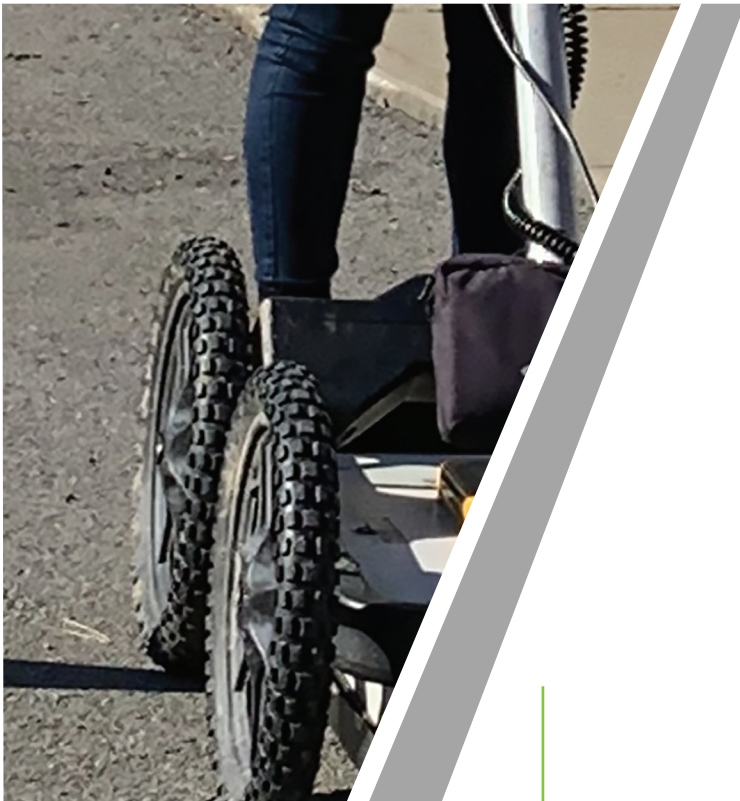


**GPI**

**A Joint Venture**

## CAPABILITIES

*Civil/Geotechnical Engineering, Environmental Services,  
Mechanical-Electrical-Plumbing (MEP),  
and Structural Engineering*



Rhea-GPI JV is a small business venture providing a wide range of innovative, cost-effective solutions to engineering and environmental challenges.



## The GPI-Rhea Joint Venture brings together Rhea Engineers & Consultants, Inc. (Rhea) and Greenman-Pedersen, Inc. (GPI)

Our two firms have an extensive and growing working relationship which brings our strengths and assets together to form this exciting Mentor-Protégé JV (MPJV). This MPJV was formed with the intent of enhancing Rhea's existing surveying capabilities from conventional boundary, cadastral and topographic surveying to include terrestrial and aerial LiDAR, 3D Scanning, and other advanced techniques.

### GPI

GPI has every confidence in the Mentor-Protégé Program offered by the Small Business Administration. Therefore, as a recognized mentor in vertical and horizontal design, construction management, and surveying/ mapping, GPI formalized a mentor-protégé agreement with Rhea - a woman-owned small business firm in 2020.

With a staff of over 1700 employees in more than 55 offices nationwide, GPI is an award-winning, multi-discipline engineering firm that has been providing professional design, planning, surveying/mapping and construction management services to all levels of government and industry throughout the United States since our founding in 1966. Our values of teamwork, quality, and commitment set us apart and are the key elements for our growth and continued success in creating the infrastructure that people need most.

Website: <https://www.gpinet.com>

### Rhea

Rhea is a 100% woman-owned professional corporation providing civil, environmental, water resources, electrical, mechanical, geophysical, and geotechnical engineering and consulting services. Rhea provides sustainable, innovative, and cost-effective solutions to Federal/state governments Fortune 1000 companies, universities, Municipal authorities, and to other architect-engineer firms.

With decades of experience in varied types and scales of work, the professionals at Rhea stand at the intersection of tradition and innovation. The Rhea team is committed to excellence in technical and organizational management and combine real-world experience with the latest software and hardware to deliver unparalleled, sustainable solutions.

Website: <https://www.rhea.us/about/>





## NAICS Rhea-GPI JV:

541330-Engineering | 541370-Surveying | 541340-Drafting  
541620-Environment | 541360-Geophysical  
562910-Remediation | 541720-Cultural Resources

## Cage Code Rhea-GPI JV:

8JHG9

## UEI Rhea-GPI JV:

G26NZLHLB353

## Certifications:

Rhea-GPI JV: DBE | WBE | WOSB

Rhea-GPI JV: SBA Small  
Business Mentor-Protégé;  
licensed surveyors in over  
20 states.

## Rhea Core Competencies

### SURVEYING-GEOSPATIAL



- Property services
- Utilities
- Roads & bridges
- Aerial imagery
- Construction surveys
- Laser scanning
- Bathymetry

### CIVIL-GEOTECHNICAL



- Site development
- Geotech site characterization
- Geophysical investigations
- Airfield design/CM
- Stormwater design

### MEP



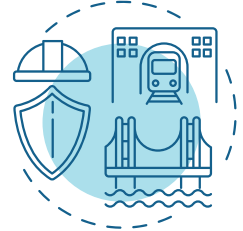
- New construction
- Renovations/repositioning
- Infrastructure upgrades
- Design/build
- Sustainable design

### ENVIRONMENTAL



- ESA - Phase 1 & 2
- ACM, LBP, mold, & radon
- Soil & water sampling/analysis
- Remediation
- Wetland delineation

### STRUCTURAL



- Design/rehabilitation
- Historic structures
- Bridge inspection
- Seismic analysis
- Protective coatings
- Load ratings
- Safety training

## Past Performance



US Army Corps  
of Engineers.



Michael Baker  
INTERNATIONAL



Allegheny County Airport Authority™





# GPI

JOINT VENTURE

## CONTACT OUR TEAM

Rhea  
Marcella G. Johnson, P.E.

333 Rouser Road  
Suite 301  
Moon Township, PA 15108  
P 724.443.4111

[marcy.johnson@rhea.us](mailto:marcy.johnson@rhea.us)



**SBA WOSB**  
Woman Owned Small Business

GPI  
James P. Moore, P.E.

52 Glenmaura National Blvd.  
Suite 302  
Scranton, PA 18505  
P 570.800.5771

[jmoore@gpinet.com](mailto:jmoore@gpinet.com)